

### Crusader's Check

**Rnd 1:** With B, knit.

**Rnd 2 and all even-numbered rnds:** With same color as previous rnd, knit (or purl) same sts worked on previous rnd; sl same slipped sts.

**Rnd 3:** With A, \*K2, sl 1, K4, (sl 1, K1) 3 times, sl 1, rep from \*.

**Rnd 5:** With B, \*K10, sl 1, K3, rep from \*.

**Rnd 7:** With A, \*(K3, sl 1) twice, K5, K1, rep from \*.

**Rnd 9:** With B, \*K10, sl 1, K3, rep from \*.

**Rnd 11:** With A, \*K4, sl 1, K2, (sl 1, K1) 3 times, sl 1, rep from \*.

**Rnd 13:** With B, knit.

**Rnd 15:** With A, \*(sl 1, K1) 3 times, sl 1, K4, sl 1, K2, rep from \*.

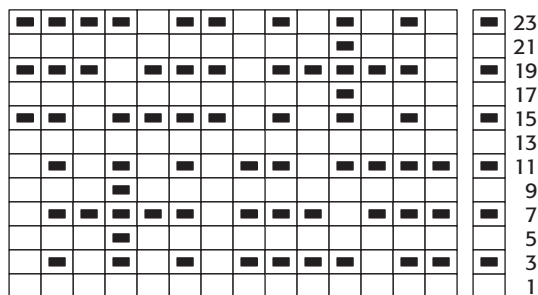
**Rnd 17:** With B, \*K3, sl 1, K10, rep from \*.

**Rnd 19:** With A, \*sl 1, K5, (sl 1, K3) twice, rep from \*.

**Rnd 21:** With B, \*K3, sl 1, K10, rep from \*.

**Rnd 23:** With A, \*(sl 1, K1) 3 times, sl 1, K2, sl 1, K4, rep from \*.

**Rnd 24:** As rnd 2.  
Rep rnds 1–24.



### Spearhead

**Rnd 1:** With B, \*K3, sl 1, K5, sl 1, K4, rep from \*.

**Rnd 2 and all even-numbered rnds:** With same color as previous rnd, knit (or purl) same sts worked on previous rnd; sl same slipped sts.

**Rnd 3:** With A, \*sl 1, K1, sl 1, K2, sl 1, K1, sl 1, K2, sl 1, K1, sl 1, rep from \*.

**Rnd 5:** With B, \*K4, sl 1, K3, sl 1, K5, rep from \*.

**Rnd 7:** With A, \*(K1, sl 1) twice, K5, (sl 1, K1) twice, sl 1, rep from \*.

**Rnd 9:** With B, \*K4, (sl 1, K1) 3 times, K4, rep from \*.

**Rnd 11:** With A, \*K1, sl 1, K9, sl 1, K1, sl 1, rep from \*.

**Rnd 13:** With B, \*K2, (sl 1, K1) 5 times, K2, rep from \*.

**Rnd 15:** With A, \*K1, sl 1, K9, sl 1, K2, rep from \*.

**Rnd 17:** With B, \*sl 1, K2, (sl 1, K1) 4 times, K1, sl 1, K1, rep from \*.

**Rnd 19:** With A, \*K2, sl 1, K7, sl 1, K3, rep from \*.

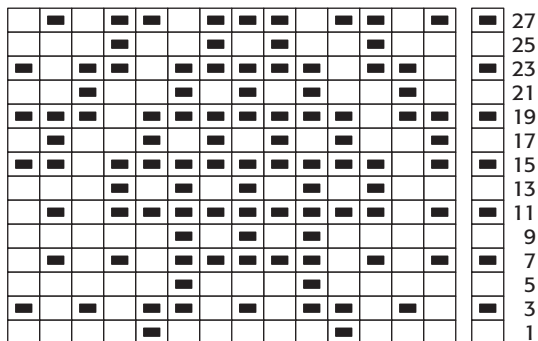
**Rnd 21:** With B, \*K1, sl 1, K2, (sl 1, K1) 3 times, K1, sl 1, K2, rep from \*.

**Rnd 23:** With A, \*sl 1, K2, sl 1, K5, sl 1, K2, sl 1, K1, rep from \*.

**Rnd 25:** With B, \*(K2, sl 1) twice, K1, sl 1, K2, sl 1, K3, rep from \*.

**Rnd 27:** With A, \*K1, sl 1, K2, sl 1, K3, sl 1, K2, sl 1, K1, sl 1, rep from \*.

**Rnd 28:** As rnd 2.  
Rep rnds 1–28.



*Was on page 93*

### Pharaoh's Check

Rnd 1: With B, knit.

Rnd 2 and all even-numbered

rnds: With same color as previous rnd, knit (or purl) same sts worked on previous rnd; sl same slipped sts.

Rnd 3: With A, \*(sl 1, K2) twice, sl 1, K7, rep from \*.

Rnd 5: With B, \*K1, sl 1, K3, sl 1, K8, rep from \*.

Rnd 7: With A, \*(sl 1, K1) 3 times, sl 1, K7, rep from \*.

Rnd 9: With B, \*K1, sl 1, K3, sl 1, K8, rep from \*.

Rnd 11: With A, \*(sl 1, K2) twice, sl 1, K7, rep from \*.

Rnd 13: With B, knit.

Rnd 15: With A, \*K7, sl 1, (K2, sl 1) twice, rep from \*.

Rnd 17: With B, \*K8, sl 1, K3, sl 1, K1, rep from \*.

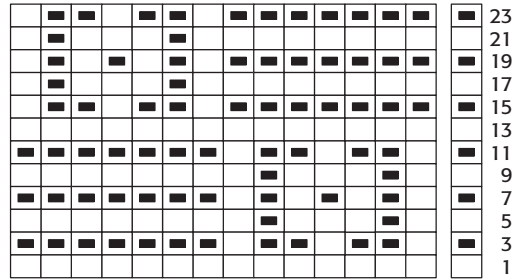
Rnd 19: With A, \*K7, (sl 1, K1), sl 1, rep from \*.

Rnd 21: With B, \*K8, sl 1, K3, sl 1, K1, rep from \*.

Rnd 23: With A, \*K7, sl 1, (K2, sl 1) twice, rep from \*.

Rnd 24: As rnd 2.

Rep rnds 1–24.



Was on page 92

### Double Spiral

Rnd 1: With B, knit.

Rnd 2 and all even-numbered

rnds: With same color as previous rnd, knit (or purl) same sts worked on previous rnd; sl same slipped sts.

Rnd 3: With A, \*(K1, sl 1) twice, K5, (sl 1, K1) twice, sl 1, rep from \*.

Rnd 5: With B, \*K4, sl 1, K3, sl 1, K5, rep from \* around.

Rnd 7: With A, \*K1, sl 1, K3, sl 1, K1, sl 1, K3, sl 1, K1, sl 1, rep from \*.

Rnd 9: With B, \*K1, (sl 1, K3) 3 times, rep from \*.

Rnd 11: With A, \*K1, (sl 1, K3) 3 times, K1, rep from \*.

Rnd 13: With B, \*K4, (sl 1, K3) twice, K1, sl 1, rep from \*.

Rnd 15: With A, \*(K3, sl 1) 3 times, K2, rep from \*.

Rnd 17: With B, \*(sl 1, K1) twice, K2, (sl 1, K1) twice, K2, sl 1, K1, rep from \*.

Rnd 19: With A, \*K5, sl 1, K3, sl 1, K4, rep from \*.

Rnd 21: With B, \*(sl 1, K1) 3 times, K4, (sl 1, K1) twice, rep from \*.

Rnd 23: With A, \*knit.

Rnd 25: With B, \*(K1, sl 1) twice, K5, (sl 1, K1) twice, sl 1, rep from \*.

Rnd 27: With A, \*K4, sl 1, K3, sl 1, K5, rep from \*.

Rnd 29: With B, \*K1, sl 1, K3, (sl 1, K1) twice, K2, sl 1, K1, sl 1, rep from \*.

Rnd 31: With A, \*K2, (sl 1, K3) 3 times, rep from \*.

Rnd 33: With B, \*sl 2, K3, sl 1, K3, sl 1, K4, rep from \*.

Rnd 35: With A, \*K4, (sl 1, K3) twice, K2, rep from \*.

Rnd 37: With B, \*(K3, sl 1) 3 times, K2, rep from \*.

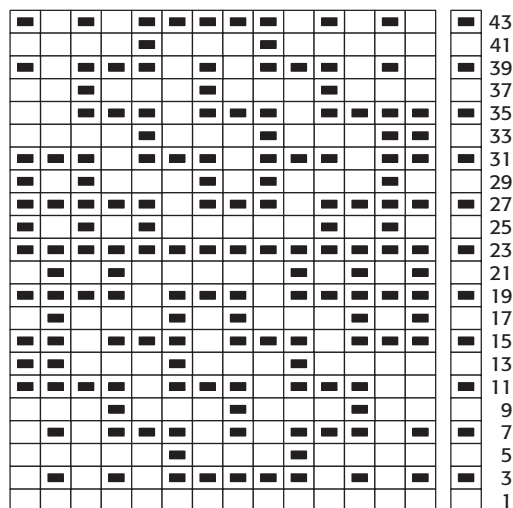
Rnd 39: With A, \*sl 1, K1, sl 1, K3, sl 1, K1, sl 1, K3, sl 1, K1, rep from \*.

Rnd 41: With B, \*K5, sl 1, K3, sl 1, K4, rep from \*.

Rnd 43: With A, \*(sl 1, K1) twice, sl 1, K5, (sl 1, K1) twice, rep from \*.

Rnd 44: As rnd 2.

Rep rnds 1–44.



Double spiral